



Total Solution Provider in Saw Device

SA07007AD1

70.0 MHz IF SAW Filter
7.28 MHz Bandwidth
Revision 0: 7. April. 2008



- Electrical Characteristics
 - Package Dimensions
 - Testing Environment
 - Frequency Characteristics
-

SAWNICS Inc.

460 Cheonheung-ri, Seonggeo-eup, Cheonan-si, Chungcheongnam-do, 330-836 / Korea.
Tel: +82 41 550 9372 / Fax: +82 41 550 9399 / www.sawnics.com

□ Electrical Characteristics

Maximum Ratings

Parameters Description	Unit	Minimum	Typical	Maximum
Operation Temperature Range	°C	-	25	-
Storage Temperature Range	°C	-40	-	85
Maximum DC Voltage	V	-	-	10
Maximum Input Power	dBm	-	-	10
Source Impedance (single ended) ⁽¹⁾	Ω	-	50	-
Load Impedance (single ended) ⁽¹⁾	Ω	-	50	-
Package type & size	D1			
Length x Width	mm ²	-	20.0 x 9.8	-
Height	mm	-	-	1.8

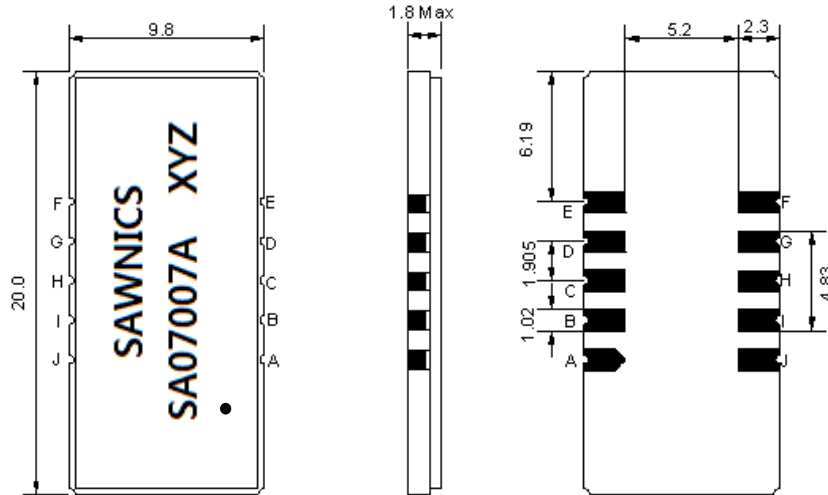
Electrical Specification

Parameters Description	Unit	Minimum	Typical	Maximum
Center Frequency (Fo)	MHz	-	70.0	-
Insertion Loss at Fo	dB	-	27.7	29.0
Group Delay Variation at Fo ±3.5 MHz	nsec	-	50	100
Absolute Delay at Fo	usec	-	3.36	-
Passband Ripple Variation at Fo ±3.5 MHz	dB	-	0.55	1.0
Bandwidth at -1dB	MHz	-	7.28	-
Bandwidth at -10dB	MHz	-	8.09	-
Bandwidth at -20dB	MHz	-	8.46	-
Bandwidth at -25dB	MHz	-	8.59	-
Bandwidth at -35dB	MHz	-	8.78	-
Ultimate Rejection	dB	45	50	-
Temperature Coefficient	ppm/°C	-	-20	-

Notes : (1) With Matching Network (Ref. Testing Environment Circuit as shown below).

Those impedances could be modified with different impedance values and/or structures, if necessary.

Package Dimensions

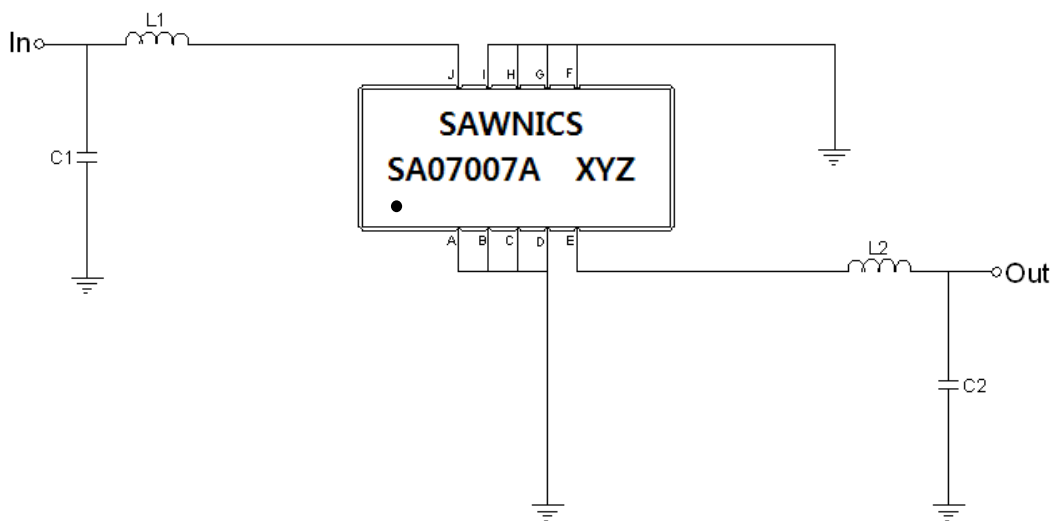


- ① SAWNICS: Brand
- ② SA07007A: Model Name
- ③ X : Date Code (Year)
- ④ Y : Date Code (Month)
- ⑤ Z : Date Code (Date)

● : Index Dot

Pin Description	
A, B, C, D, F, G, H, I	Ground
J	Input
E	Output

Testing Environment



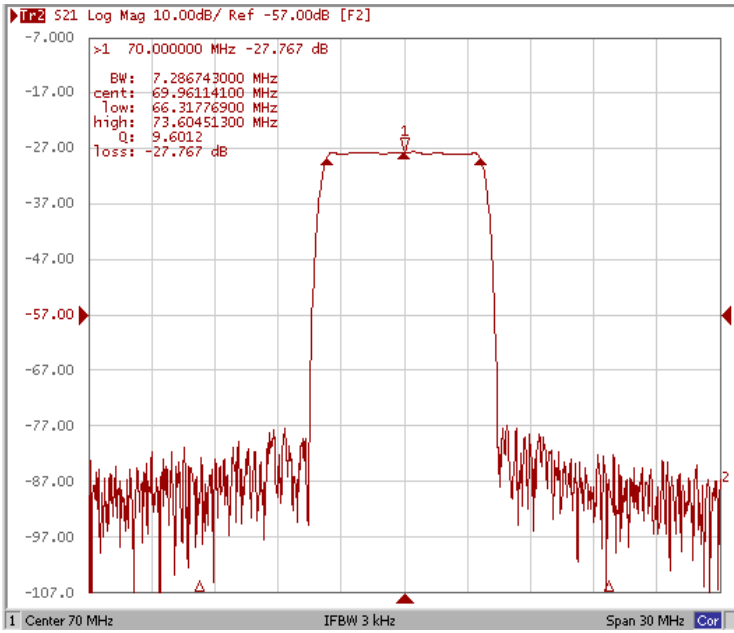
Test Fixture & Values	
Input	L1 = 180 nH , C1 = 43 pF
Output	L2 = 220 nH , C2 = 36 pF
Source/Load Impedance	50 Ω



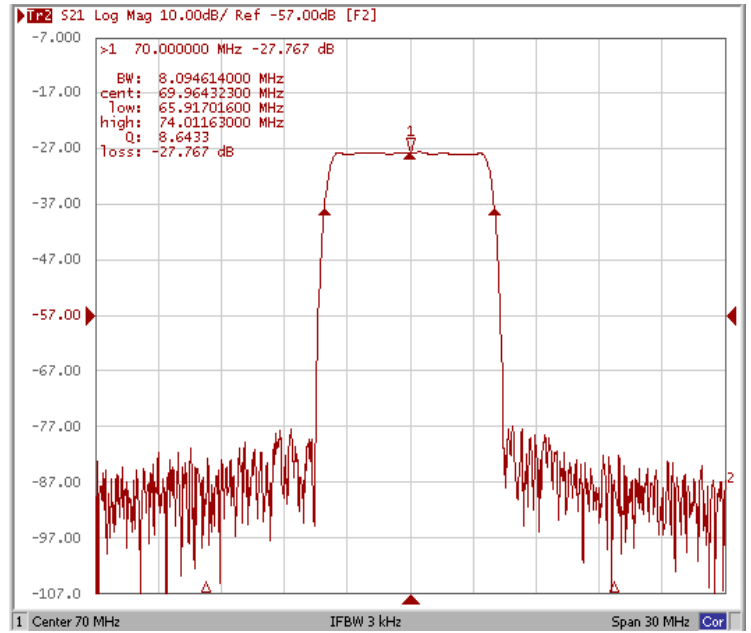
□ Frequency Characteristics

Frequency Response

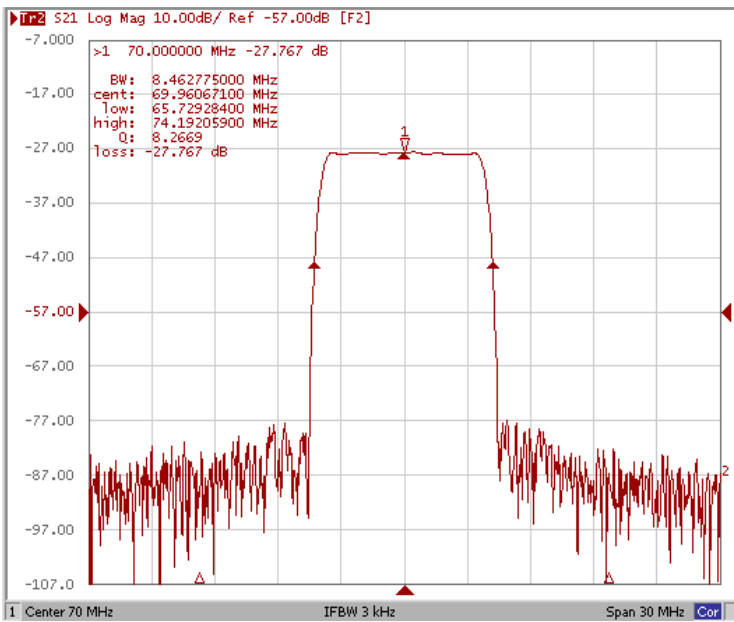
Bandwidth at -1.0 dB



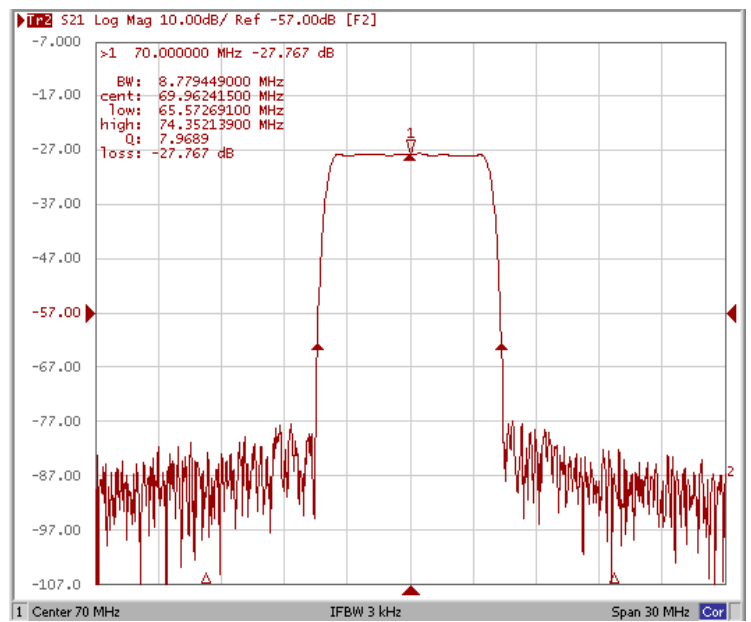
Bandwidth at -10.0 dB



Bandwidth at -20.0 dB



Bandwidth at -35.0 dB

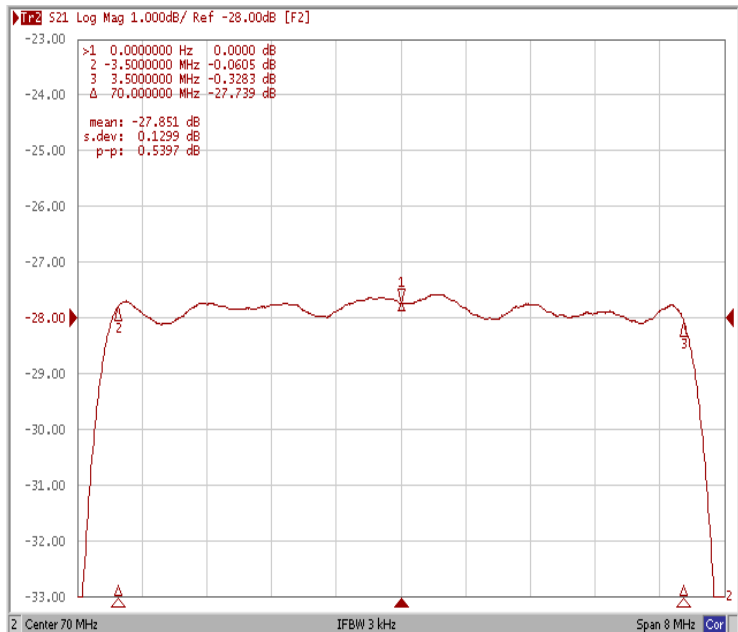




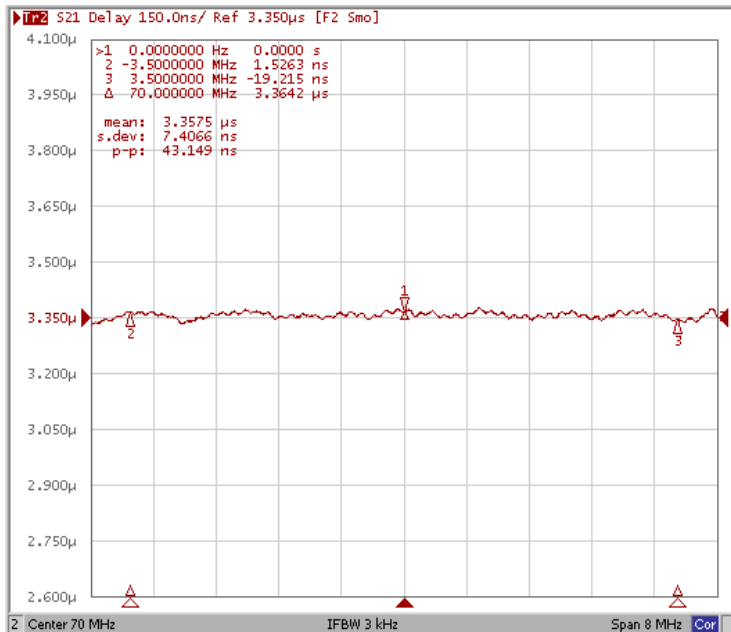
Frequency Characteristics

Frequency Response

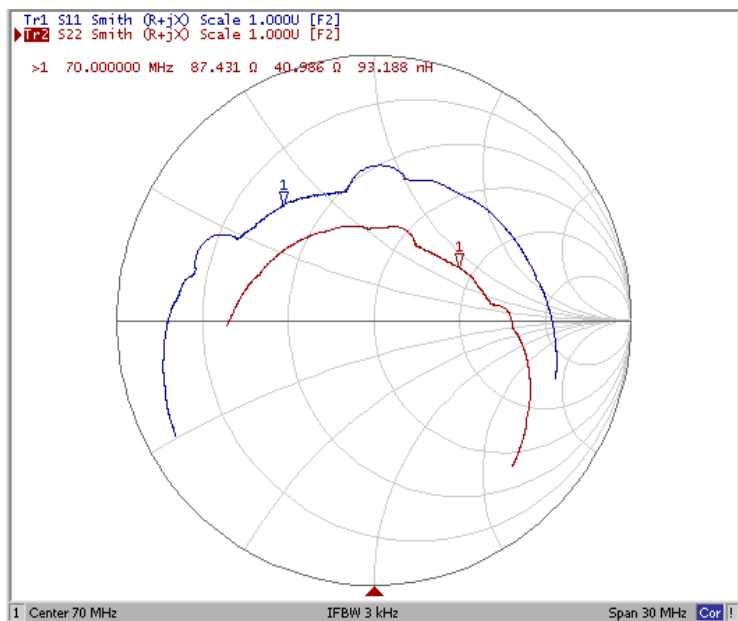
Ripple Variation Fo±3.5MHz



Group Delay Variation Fo±3.5MHz



Smith Chart



SWR

